



GREAT SOUTHERN
KILLARNEY

Conference
& Events

FLOORPLANS



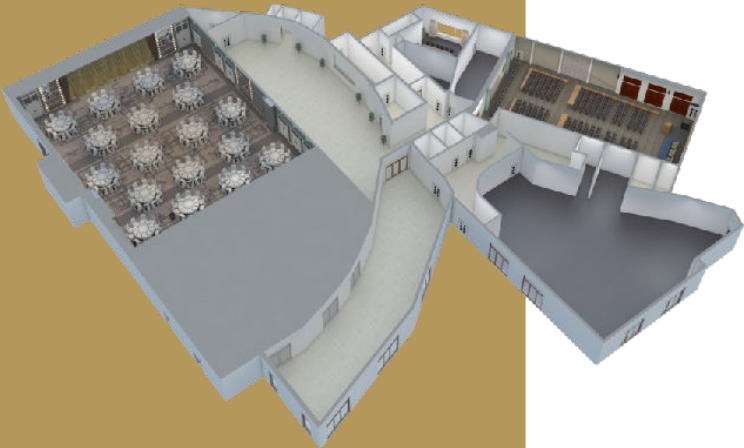
KERRY
RANKED #13



GLOBAL
DESTINATION
SUSTAINABILITY
INDEX



Conference & Events Centre

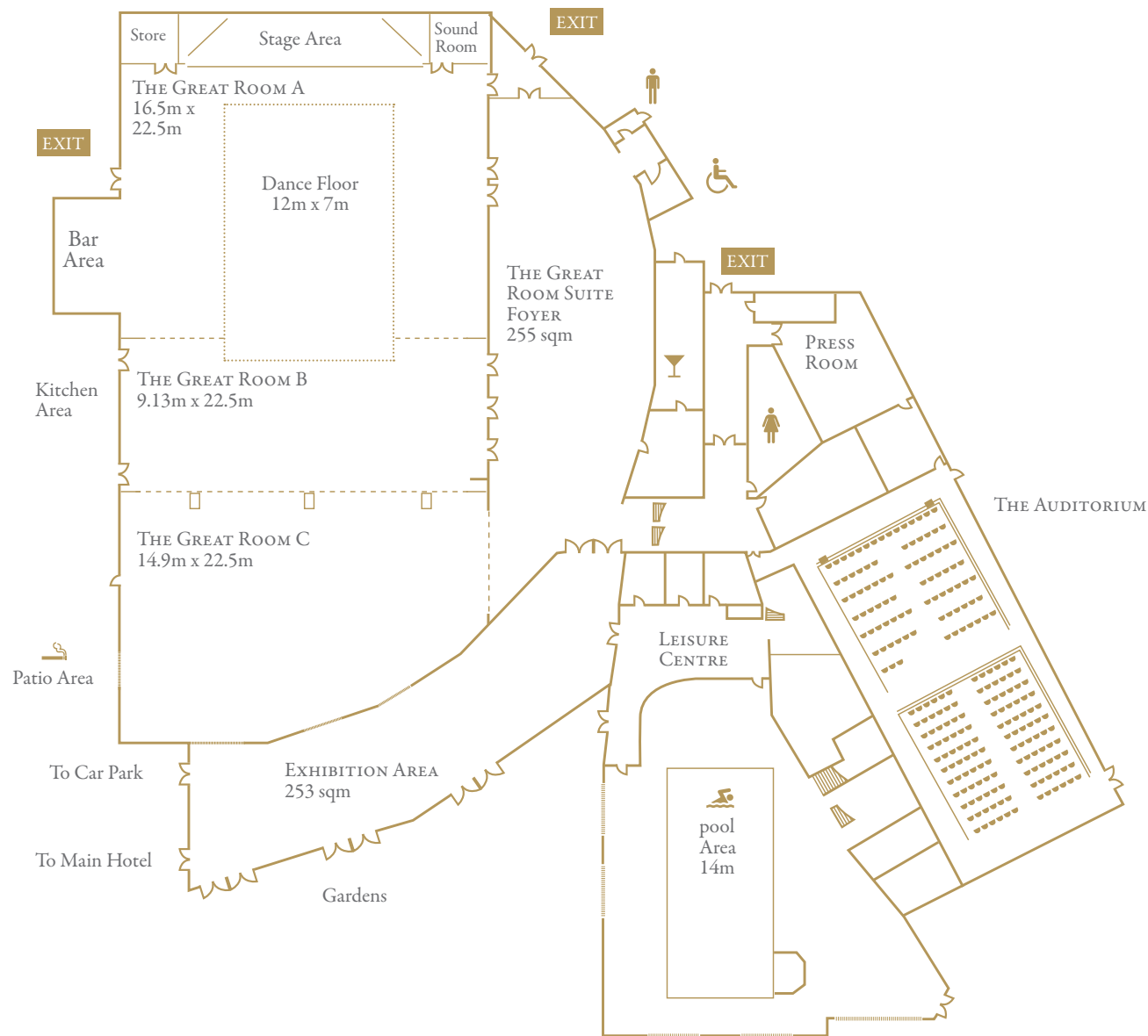


Please click on the image below to view the Great Southern Killarney's Event Centre 3-D Floor Plans with various set ups.

| <i>Capacities</i> | THEATRE | CLASS ROOM | BOARD ROOM | U - SHAPE | BANQUET | WORKSHOP |
|--------------------|---------|------------|------------|-----------|---------|----------|
| The Great Room* | 950 | 700 | 100 | N/A | 600 | N/A |
| The Great Room A | 350 | 250 | 130 | N/A | 250 | N/A |
| The Great Room B | 280 | 200 | 100 | N/A | 160 | N/A |
| The Great Room C | 220 | 150 | 60 | N/A | 160 | N/A |
| The Auditorium | 225 | N/A | N/A | N/A | N/A | N/A |
| Fredericks | N/A | N/A | N/A | N/A | N/A | 60 |
| The Press Room | 35 | 20 | 16 | N/A | N/A | N/A |
| The Writers Room | N/A | N/A | 12 | N/A | N/A | N/A |
| The Victorian Room | N/A | N/A | 10 | N/A | N/A | N/A |

* The Great Room is divisible into three sections.

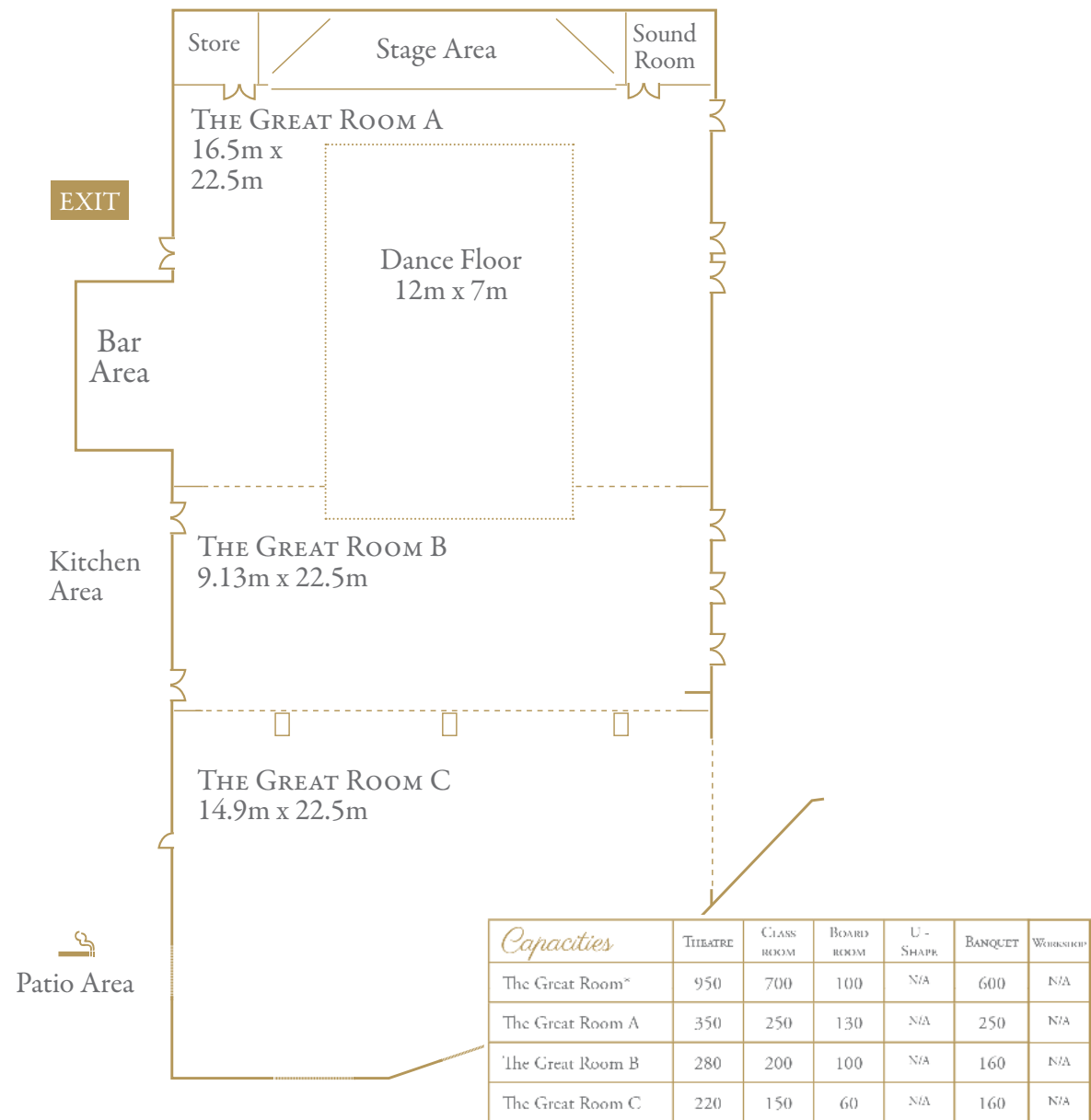
Conference
& Events
Centre



OVERVIEW

Conference
& Events
Centre

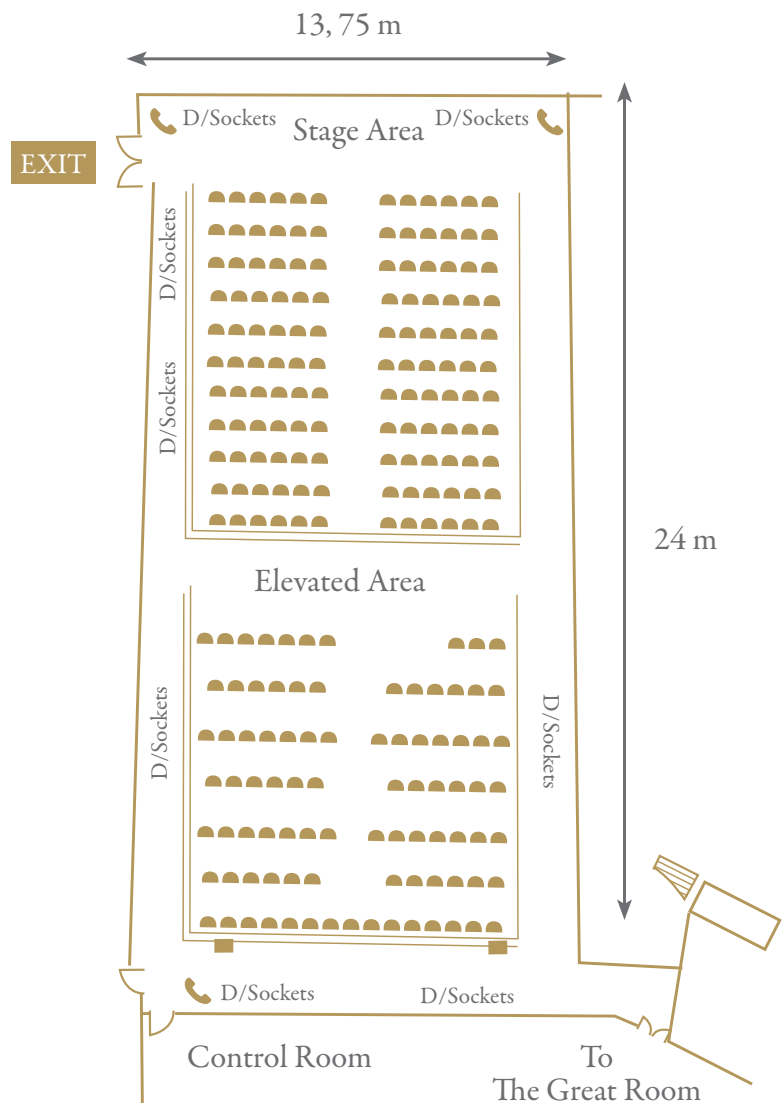
THE GREAT
ROOM
905 M²



Conference
& Events
Centre

THE
AUDITORIUM

284 M²



To The Press Room

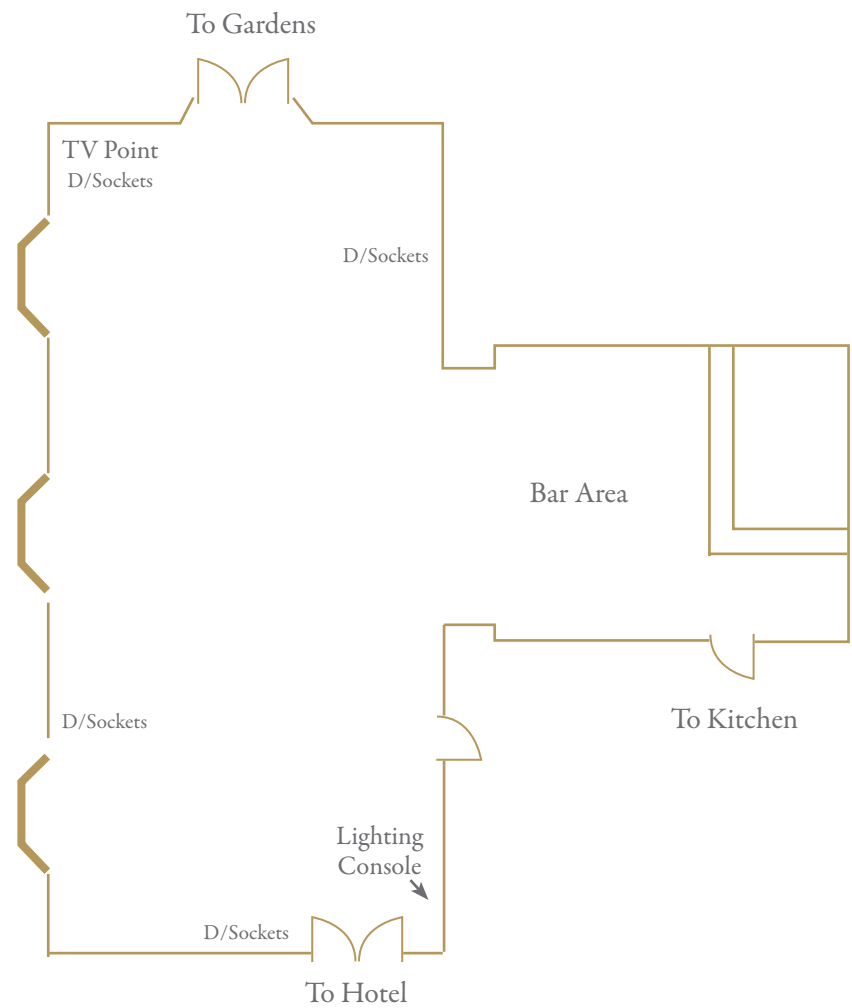
venuesearch.ie

| Capacities | THEATRE | CLASS ROOM | BOARD ROOM | U - SHAPE | BANQUET | WORKSHOP |
|----------------|---------|------------|------------|-----------|---------|----------|
| The Auditorium | 225 | N/A | N/A | N/A | N/A | N/A |

Conference
& Events
Centre

FREDERICKS

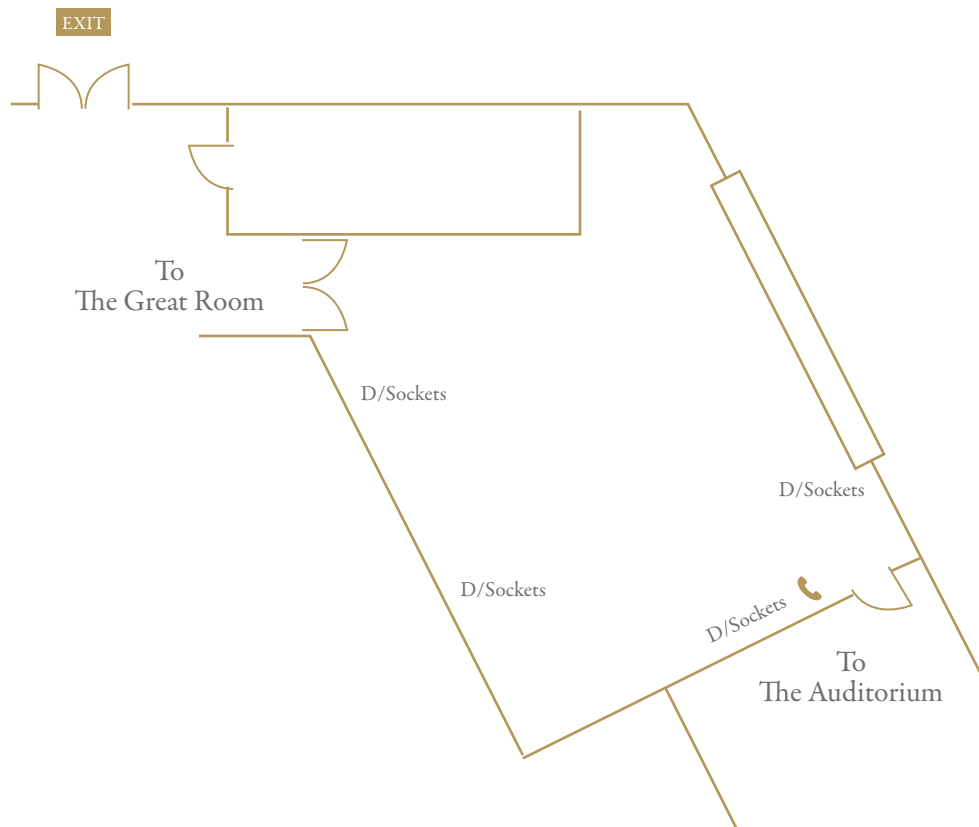
123.5 M²



| <i>Capacities</i> | THEATRE | CLASS ROOM | BOARD ROOM | U - SHAPE | BANQUET | WORKSHOP |
|-------------------|---------|------------|------------|-----------|---------|----------|
| Fredericks | N/A | N/A | N/A | N/A | N/A | 60 |

Conference
& Events
Centre

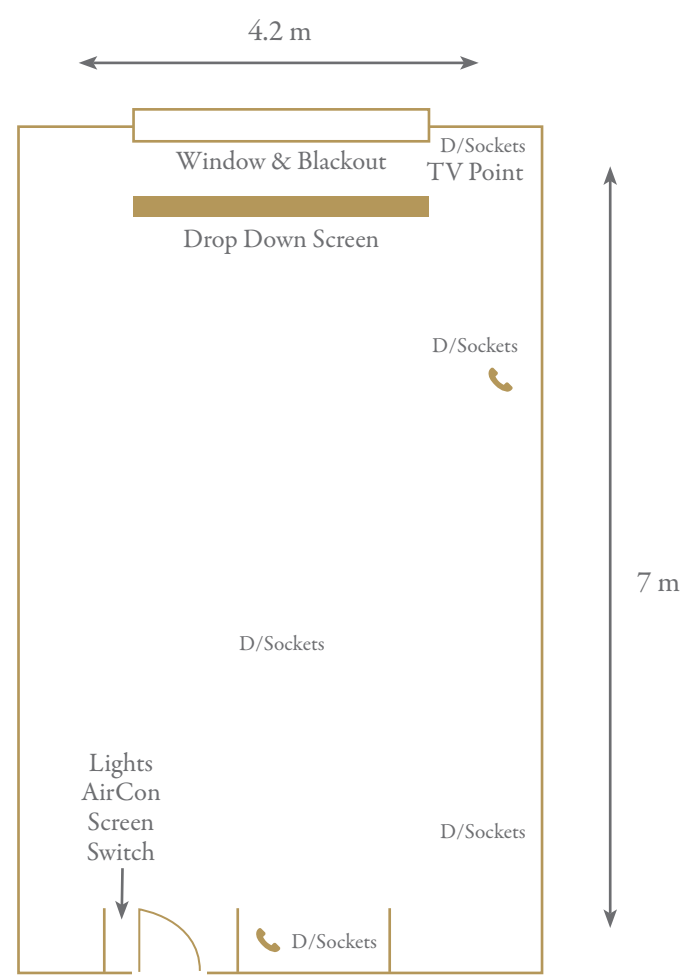
THE PRESS ROOM

45 M²

| <i>Capacities</i> | THEATRE | CLASS ROOM | BOARD ROOM | U - SHAPE | BANQUET | WORKSHOP |
|-------------------|---------|------------|------------|-----------|---------|----------|
| The Press Room | 35 | 20 | 16 | N/A | N/A | N/A |

Conference
& Events
Centre

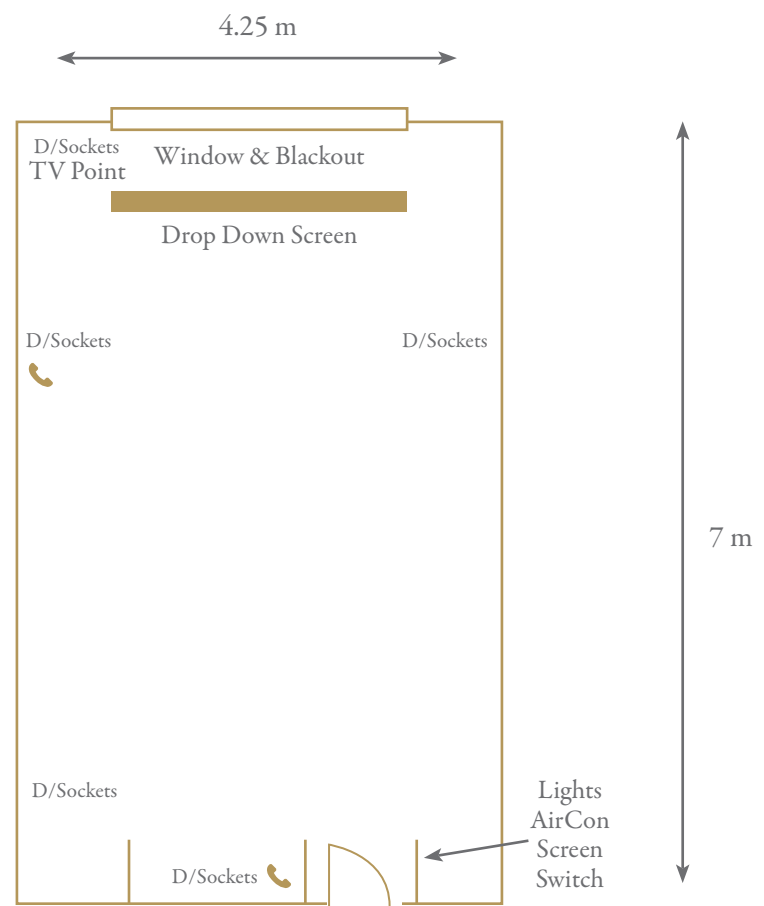
THE WRITER'S
ROOM
29.4 M²



| Capacities | THEATRE | CLASS ROOM | BOARD ROOM | U - SHAPE | BANQUET | WORKSHOP |
|-------------------|---------|------------|------------|-----------|---------|----------|
| The Writer's Room | N/A | N/A | 12 | N/A | N/A | N/A |

Conference
& Events
Centre

THE VICTORIAN
ROOM
29.75 M²



| <i>Capacities</i> | THEATRE | CLASS ROOM | BOARD ROOM | U - SHAPE | BANQUET | WEDDING |
|--------------------|---------|------------|------------|-----------|---------|---------|
| The Victorian Room | N/A | N/A | 10 | N/A | N/A | N/A |